

SITE ENTRY PROCEDURE – AUSTRALIAN OPERATIONS

1. PURPOSE

To provide a procedure for Site Entry (process for request and approval).

Ensure all persons visiting or working at any Northern Star Resources Limited (Northern Star or the Company) mine site, office or associated lease area meet the minimum site entry requirements and are appropriately inducted, escorted and aware of applicable legislative, Company (corporate and site) policies, rules and procedures, and forms required for completion.

Designed to provide a structured and systematic approach to entering and uploading site entry requirements into INX for both staff and contractors utilising the +Process modules which forms part of the safety management system.

Provide guidance with instructions on how to mobilise new staff or contractors, request a change to a roster or book new travel, cancel site visits and update people profiles in line with Northern Star's site entry requirements.

2. SCOPE

This Procedure shall apply to all employees, contractors, sub-contractors, Stakeholders, visitors and delivery drivers entering any Northern Star Australian mine site and associated lease areas.

Application shall also be applied to all new employees and staff who conduct site entry onboarding requirements on behalf of the company.

For site entry to Northern Star U.S. Operations refer to Site Entry Procedure – U.S. Operations (NSR-OHS-022S-PRO).

3. CRITICAL RISK MANAGEMENT

CRITICAL RISK STANDARD:	Not Applicable
CRITICAL RISK:	Not Applicable

4. ROLES AND RESPONSIBILITIES

Role	Key Responsibilities
Site Senior Executive / Delegate	<ul style="list-style-type: none"> Review and sign off personnel requiring exemption from part of the site entry requirements. Ensure adequate resources and support are provided for the provision of induction training and assessment activities. Provision of adequate resources for the approval and commitment of site entry requirements within the +Process module. Review of all police clearances / background checks with noted records.
Site Contact (Department Managers / Supervisors)	<ul style="list-style-type: none"> To provide persons with the necessary information and documentation required to meet site entry requirements. Review documentation and provide to Site Senior Executive / Delegate for further assessment if required Liaise with Site Administration and ensure all site entry requirements are met prior to arrival to site. Ensure that all contracting companies are aware of the site entry requirements and understand how to enter their people into the +Process module. Monitor and ensure compliance with this Procedure.
Corporate OHS Department	<ul style="list-style-type: none"> Provide assistance and direction in the application of this procedure and associated tools. Facilitate communication between site OHS personnel, OHN / Medic, external service providers and HR department. Ensure compliance of procedures and documentation to relevant legislation updates and industry standards.

Prepared by:	Joel Higgins	Document Status:	Controlled	Document No:	NSR-OHS-022-PRO
		Review Date:	18/02/2027	Revision No:	10.4
Approved by:	Manager - Safety	Approver's Signature:	Katie Jackson	Issue Date:	09/05/2025
				Page No:	1 of 12

SITE ENTRY PROCEDURE – AUSTRALIAN OPERATIONS

Site OHS Personnel	<ul style="list-style-type: none"> Ensure this Procedure is followed and adhered to by site personnel.
Site Training Personnel	<ul style="list-style-type: none"> Ensure each person on site has been allocated the correct training roles via INX intuition. Ensure persons hold relevant competencies, compliances and these are kept up to date.
Occupational Health Nurse / Medic	<ul style="list-style-type: none"> Review and approve site entry medicals, personal medical detail forms and drug and alcohol screens in accordance with this Procedure and in conjunction with the pre-mobilisation PEM review workflow. Application of risk-based decision making using the Red, Amber and Green ratings for approval, escalation and discussion on PEM reviews. Provide feedback to respective hiring / contract leads with clinically supported recommendations in respect to any red or amber classifications.
OccuMED	<ul style="list-style-type: none"> Review and approve site entry medicals, personal medical detail forms and drug and alcohol screens in accordance with this Procedure and in conjunction with the pre-mobilisation PEM review workflow. Undertake Occupational Physician (OP) review of PEM where escalated for review by site based personnel or Corporate HR.
Site Administration	<ul style="list-style-type: none"> Ensure all site entry requirements have been met per worker type classification with all associated documents completed and attached to +Process. Ensure that any site entry exemptions are approved by the Site Senior Executive / Delegate. Ensure that medical, drug and alcohol screen results and personal medical detail forms are approved by the medical centre personnel and removed from the system prior to uploading into InFlight. Ensure that all site entry compliances regarding police clearances / background checks and driver's licenses are uploaded into the correct INX modules. Only correct and valid site entry requirements / profiles are approved and committed into InFlight. Create contractor network usernames and request security access from the Corporate OHS Administration team to maintain system integrity. Continue to maintain all site profiles, update rosters, book flights and accommodation as necessary for site entry. Assign generic Induction and safety training via INX Intuition role allocation
Contracting Companies	<ul style="list-style-type: none"> Ensure this procedure is followed and adhered to for site entry. Ensure that all site entry requirements have been met as per the designated worker types with all associated documents completed and attached in the +Process module. Ensure any exemptions to the site entry requirements i.e., providing of a police clearance / background check the equivalent forms are completed and submitted for that compliance.

Prepared by:	Joel Higgins	Document Status:	Controlled
		Review Date:	18/02/2027
Approved by:	Manager - Safety	Approver's Signature:	Katie Jackson

Document No:	NSR-OHS-022-PRO
Revision No:	10.4
Issue Date:	09/05/2025
Page No:	2 of 12

SITE ENTRY PROCEDURE – AUSTRALIAN OPERATIONS

Corporate HR (only applicable for Corporate office)	<ul style="list-style-type: none"> Ensure that medical, drug and alcohol screen results and personal medical detail forms for Corporate personnel are approved by OccuMED. Ensure that all compliances regarding police clearances / background checks and driver's licenses are uploaded into the correct INX modules. Initiate usernames and request security access from the Corporate OHS Administration team to maintain system integrity. Monitor and ensure compliance with this Procedure.
--	--

5. DEFINITIONS AND ACRONYMS

Camp Guests	Personnel employed and/or contracted to a Northern Star site or any other mine sites in the Kalgoorlie region.
PEM	Pre-employment medical.

6. +PROCESS MODULE

+Process is a module of INX and will be used for site entry requests for both staff and contractors requiring access to a Northern Star mine site and associated lease areas.

The module is comprised of four workflows: Mobilisation, Change Roster / New Booking, Cancel Bookings and Edit Profile.

Security access to this module is maintained by the Corporate OHS Administration Team and requests for access will need to be done via the site contacts and administrators through Northern Star's Service Desk.

How to guides are available as appendices to this procedure.

7. +PROCESS WORKFLOWS

7.1 Mobilisation

The mobilisation workflow is required for all worker type classifications and will be used to request site entry. Refer to Section 6. Worker Type Classifications for a breakdown of each type of worker and the site entry requirements for each.

People profile details will read across from the InFlight module and will be available, dependant on security, for editing.

Worker type classifications will determine the site entry requirements and will dictate the level of documentation required for each visit to site.

Refer to NSR-OHS-022E-GUI for Contractor Mobilisation and NSR-OHS-022F-GUI for NSR / NSMS Mobilisation.

7.2 Change Roster / New Booking

The change roster / new booking workflow is to be used for personnel who have been cleared for site entry and are not required to complete the mobilisation workflow request.

i.e., short term workers within their timeframes of being on site / long term workers who are returning to site within six months of their departure.

Refer to Section 7. Site Entry Requirements for a breakdown of what is required for each portion of site entry and the strict timeframes around returning to site as a long-term worker.

Refer to NSR-OHS-022G-GUI for Change Roster / New Booking.

7.3 Cancel Booking

The cancel booking workflow is available for any visitors, shut down workers, short term workers that are no longer coming to site and their roster / hours need to be cancelled within the system.

This workflow is for cancelling travel only and any site entry cancellation needs to still be advised by email to the site administrators / site contacts.

Refer to NSR-OHS-022H-GUI for Cancelling a Booking.

Prepared by:	Joel Higgins	Document Status:	Controlled
		Review Date:	18/02/2027
Approved by:	Manager - Safety	Approver's Signature:	Katie Jackson

Document No:	NSR-OHS-022-PRO
Revision No:	10.4
Issue Date:	09/05/2025
Page No:	3 of 12

7.4 Edit Profile

The edit profile workflow is available for both contractors and employees who need to update their people profile data, including personal information such as employer, email, phone numbers, address and emergency contact details.

People profile details will read across from the InFlight module and will be available, dependant on security, for editing.

Refer to NSR-OHS-022I-GUI for Editing a Profile.

8. WORKER TYPE CLASSIFICATIONS

8.1 Camp Guests

All guests staying at either the Ford Bayley (Coolgardie) camp or the Jagcor camp in Kalgoorlie are obligated to sign and strictly adhere to the village camp rules. This requirement is applicable to all guests, regardless of whether they are working on an NSR site or any other mine site.

8.2 Visitors

A visitor is a person that has come to site and is completing office based duties, not working on high risk tasks or in a high-risk area. Visitors must be escorted at all times by a fully inducted person when in operational areas and are not permitted to drive or operate a vehicle.

A visitor cannot be onsite for more than 8 consecutive days within a Northern Star Australian mine site or associated lease and 5 consecutive days within a Northern Star International mine site or associated lease.

If a visitor is required onsite for longer than these periods, then they must fulfil the requirements of the short-term Worker Classification.

All visitors must complete a visitor Induction.

All workers based at the Corporate Head Office must complete a +Process Change Roster / New Booking request prior to travelling to site.

8.3 Delivery Driver

Delivery drivers are categorised into three different role types:

Escorted Delivery Drivers	<ul style="list-style-type: none"> Delivery drivers who require a site escort at all times while on-site. These drivers do not hold the necessary site induction or authorisations to move unaccompanied. Typically includes one-off or infrequent deliveries where the driver is unfamiliar with site requirements.
Unescorted Delivery Drivers	<ul style="list-style-type: none"> Delivery drivers who have completed the necessary site induction and safety requirements to move unaccompanied within designated areas. These drivers are authorised to access specific locations without requiring an escort, provided they comply with all site protocols. Usually includes frequent delivery personnel with an ongoing requirement to access the site.
Dangerous Goods Delivery Drivers	<ul style="list-style-type: none"> Delivery drivers responsible for transporting and handling hazardous or dangerous goods. Must hold the required dangerous goods certifications/licence and comply with site-specific hazardous materials handling procedures. May require additional induction or authorisation depending on the nature of the materials being delivered.

8.4 Family Visitor

A family visitor is a person that has come to site for a non-work related visit. A family visitor will spend majority of their time in the accommodation village or office block. They must be escorted by a fully inducted person at all times when in operational areas and are not permitted to drive or operate a vehicle.

Prepared by:	Joel Higgins	Document Status:	Controlled
		Review Date:	18/02/2027
Approved by:	Manager - Safety	Approver's Signature:	Katie Jackson

Document No:	NSR-OHS-022-PRO
Revision No:	10.4
Issue Date:	09/05/2025
Page No:	4 of 12

8.5 Short Term Worker

A short term worker is a person working in a high-risk area or completing high risk tasks. They are required to be escorted at all times by a fully inducted person when in operational areas, until they have completed and passed a short term worker induction or fulfilled the requirements of a long term worker.

Any personnel travelling to site for more than 8 consecutive days within a Northern Star Australian mine site or associated lease must fulfil this role.

A short term worker is permitted to work a maximum of three consecutive rosters if working an 8/6 (8 days on, 6 days off) rotation or less, or two consecutive rosters if working a 2/1 (2 weeks on, 1 week off) or 2/2 (2 weeks on, 2 weeks off) rotation or more.

All short term workers that exceed the above time periods or continue to come to site on a regular / long term ad hoc basis must fulfil the requirements of the long term worker classification.

Short Term Worker Site Entry Requirements: Driver's License, Drug and Alcohol Screen, National Police Clearance / Background Check, Personal Medical Details Form or Medical, Site Inductions.

8.6 Shutdown Worker

A shutdown worker is a person brought to site to work exclusively on a planned shutdown. They are required to be escorted at all times until the site induction has been completed.

Shutdown Worker Site Entry Requirements: Driver's License, Drug and Alcohol Screen, National Police Clearance / Background Check, Personal Medical Details Form or Medical, Site Inductions and a Construction Induction White Card.

8.7 Long Term Worker

8.7.1 Long Term Contractors

Long term contractors are personnel who work on a regular roster on a permanent basis and also include persons who come and go to site on a relatively regular basis but are not based on a consistent roster. All long term contractors will be assigned the Intuition role (NSR – All employees) role and site specific roles.

Short term workers that exceed the time periods or continue to return to site on a regular / long term ad hoc basis must fulfil this role.

Long Term Contractor Site Entry Requirements: Driver's License, Drug and Alcohol Screen, Medical, National Police Clearance / Background Check, Company and Site Inductions.

8.7.2 Long Term Employees

Long term employees are personnel who work for Northern Star or Northern Star Mining Services on a permanent basis, they are required to be escorted at all times by a fully inducted person until they have completed and passed their company and site inductions.

Long Term Employees Site Entry Requirements: Driver's License, Drug and Alcohol Screen, Medical, National Police Clearance / Background Check, Company and Site Inductions.

A long term employee will be required to complete a Personal Medicals Details Form if transferring between sites.

9. SITE ENTRY REQUIREMENTS

9.1 Driver's License

A valid driver's license (minimum C Class for Australia, Equivalent or Exceedance) must be produced if driving on any Northern Star mine site and associated lease or operating mobile mining equipment.

If a license is unable to be produced or is not valid or has expired, site entry (dependant on the position and role) may still be granted and cleared.

Any license suspensions, cancellations or limitations placed upon the operator must be communicated to the supervisor / department manager onsite immediately.

Exceptions may be authorised by the Site Senior Executive / Delegate Manager only.

No person is to drive a vehicle or operate mobile mining equipment unless they are trained, assessed and have been deemed competent to operate that equipment.

Prepared by:	Joel Higgins	Document Status:	Controlled
		Review Date:	18/02/2027
Approved by:	Manager - Safety	Approver's Signature:	Katie Jackson

Document No:	NSR-OHS-022-PRO
Revision No:	10.4
Issue Date:	09/05/2025
Page No:	5 of 12

All operators of vehicles and mobile mining equipment are required to complete the general site induction and any area specific induction, along with specific vehicle / equipment and road training including familiarisation of all relevant procedures for the area and equipment that will be operated.

9.2 Police Clearance / Background Checks

Initial police clearances / background checks for site entry must be less than 12 months old at time of submission. Outside of these timeframes a new clearance must be applied for and produced.

If a person is absent from site for a period exceeding 12 months, they will require a new clearance. Some positions may require more periodic clearances at the Managers' discretion.

If any records are evident, the clearance must be assessed by the Site Senior Executive / Delegate Manager. Individuals' criminal record is assessed on a case by case basis with the following base considerations:

- inherent requirements of the task or position to be undertaken;
- type and number of offences and penalties imposed; and
- timeframe between offences and recent last offence.

Northern Star utilise the Chamber of Minerals and Energy (CME) for providing police clearances in Australia, however, will accept clearances from other authorised companies.

Where a Police Clearance / Background Check has been applied for, but not received, the NSR-HR-059-FOR Declaration Pending Police Clearance Form may be completed to enable site entry. This form must be signed off by the Site Senior Executive / Delegate Manager prior to site entry approval and the clearance must be followed up no later than 30 days after the form is submitted. Failure to declare, false or misleading information on the form may result in termination of employment or the immediate disengagement from all work at any Northern Star site.

If further clarification is required on the police clearance / background checks, please contact Northern Star Corporate Human Resources or Legal Counsel for advice.

9.3 Drug and Alcohol Screens

If a person is required to complete a drug and alcohol screen prior to arrival, the screen must be completed within 90 days of arrival to site. The drug screen completed prior to site entry must be laboratory urine DAS (lab DAS).

Short Term Worker and Shutdown Worker drug and alcohol screens are only valid for 90 days from the screening date. Re-entry to site after the 90 days will continuously result in the site entry requirements having to be re-met with a new drug and alcohol screen produced each time.

Long term contractors and employees returning to site after being absent for six months or more must submit a clear drug and alcohol screen.

The screen is to be reviewed and approved by the Medical Centre Personnel.

If a drug and alcohol screen is required to be completed upon arrival to site (outside of the random program), NSR-OHS-040-FOR Site Based Drug Screening Authorisation form must be filled in and written approval must be granted by the Site Senior Executive / Delegate Manager prior to accessing site. Upon entry to site the worker must present to the Medical Centre Personnel for testing.

9.4 Medical Requirements

A pre-employment, post-offer medical assessment will be conducted prior to employment with the Company in any position. A pre-employment medical for a contractor or labour hire worker, must be no more than 12 months old, must be completed by a registered medical practitioner and must include the following assessments as a minimum:

- medical questionnaire and assessment
- musculoskeletal assessment
- cardiovascular/aerobic fitness assessment
- spirometry
- audiometry; and
- drug and alcohol screen

Employee medicals will be completed in line with Employment Medical Form – Medical Practitioner (NSR-OHS-001H-FOR) and Employment Medical Form – Applicant (NSR-OHS-001G-FOR).

Prepared by:	Joel Higgins	Document Status:	Controlled
		Review Date:	18/02/2027
Approved by:	Manager - Safety	Approver's Signature:	Katie Jackson

Document No:	NSR-OHS-022-PRO
Revision No:	10.4
Issue Date:	09/05/2025
Page No:	6 of 12

Completed medicals, site access medical forms and vaccination documentation is submitted through the +Process portal for review and clearance (see appendix 1 – 3 for mobilisation requirements).

Occasionally NSR may require additional health screening which will be communicated to personnel as required.

Long term workers returning to site after being absent for six months or more may be requested to meet full site entry requirements again including a medical.

9.5 Personal Medical Details

If personal medical details are required for site entry (short term workers, shut down workers and long term workers who are transferring between sites) NSR-OHS-039-FOR Site Access Personal Medicals Details form must be completed for Northern Star Australian mine sites and associated leases.

Personal Medical Details forms are valid for 90 days. Re-entry to site after these periods will continuously result in the site entry requirements having to be re-met with a personal medical details form produced each time.

Short term and shutdown workers have the option of completing a full medical assessment instead of completing the Site Access Personal Medicals Details form, which is valid for site entry for 12 months from the date of completion of the medical assessment.

Any over the counter and prescription medication must be declared as per NSR-OHS-009-PRO Drug and Alcohol Procedure using the Prescribed and Over-the-Counter Medication Declaration form (NSR-OHS-001B-FOR).

10. PROCESS

10.1 Site Contact

- Liaises with the person / company admin for personnel coming to site. They will confirm dates, obtain names and be the primary contact for ongoing arrangements.
- Ensure that the company admin has a valid network username, security and log in details to access +Process for site entry.
- Liaises with the Site Administrator to ensure all site entry requirements have been met, approved and committed to InFlight.
- Should entry to site be required without all the necessary clearances being met prior to arrival, the site contact must obtain the Site Senior Executive / Delegate Manager signature of approval on the relevant exceedance forms.
- Should site entry requirements not be met, the site contact must notify the contract company of the reasons why site entry was denied.
- If a person travelling to site cancels or withdraws site entry, the site contact must notify the site administrator immediately, so INX can be updated and site entry cancelled.

10.2 Site Administrator

- Has a responsibility to ensure all site entry requirements have been met and all documentation has been attached to the site entry requirements tab within +Process.
- Prior to approving the mobilisation workflow, check that no duplicate profiles are being created and the correct existing profiles are being updated.
- If site entry requirements are not met or documents are not completed in full, Site Administrators are not permitted to approve the +Process workflows or confirm any travel or grant entry to site. All travel is 'pending' until the Site Senior Executive / Delegate Manager has provided written approval for all site entry exemptions.
- Medicals, Drug and Alcohol Screens, Personal Medical Detail Forms and evidence to support compliance with Government issued directives must be approved by the Medical Centre Personnel and then removed from +Process prior to committing to InFlight.
- Compliance tabs are maintained, and comments are transferred across to the Reference ID box within InFlight once the mobilisation workflow has been committed.
- Company and site-specific roles are to be assigned so inductions can be completed.
- Camp accommodation is to be booked in InFlight.
- Should site entry requirements not be met or a person travelling to site cancels, all travel and exposure hours entered in the system must be cancelled and the profile deactivated.

Prepared by:	Joel Higgins	Document Status:	Controlled
		Review Date:	18/02/2027
Approved by:	Manager - Safety	Approver's Signature:	Katie Jackson

Document No:	NSR-OHS-022-PRO
Revision No:	10.4
Issue Date:	09/05/2025
Page No:	7 of 12

- Approvals for each +Process workflow to be processed in a timely manner and all comments inserted into the system to maintain a professional nature.

10.3 Contracting Companies

- Ensure that +Process is used for all site entry requests.
- Ensure that the correct worker type classifications are selected when requesting site entry.
- All site entry requirements have the correct documents attached and the NSR-OHS-022E-GUI for contractor mobilisation is followed.
- Any exemptions to site entry have the relevant documentation completed and attached to the site requirement tab.
- Requests for site entry are completed in a timely manner and all comments made within the system maintain a professional nature.
- Liaise with site contact or site administrator if access is required to +Process or assistance is needed when using the module.

11. INDUCTIONS

11.1 Company Induction (Valid 2 Years)

Site requirement for long term workers, valid for 2 years and will provide an overview of Northern Star as a company and educate personnel on information that is relative to all Northern Star Sites and the Corporate Office.

11.2 Site Induction (Valid 2 Years)

Site requirement for long term workers, valid for 2 years and designed to provide vital information specific to the Northern Star Site the person will be visiting and working. This information is not covered in the Company induction and is designed for workers who will be on site on a permanent basis.

11.3 Short Term Workers Induction (Valid for duration of their stay)

Site requirement for short term workers, valid for the duration of each stay, unless site has been left for an extended break longer than the agreed roster cycle, in which case the induction must be completed again. This induction is only valid for the duration of each stay and must be completed each time site entry is requested. Information within this induction is site specific and is covered in the site induction but not in the company induction, this induction allows a short term worker to work unescorted.

11.4 Visitors Induction (Completed Each Visit)

Site requirement for a visitor and must be completed each visit to site. Information within this induction provides a general overview of the site with vital emergency information, this is covered in both the short term worker and site induction.

11.5 Shutdown Workers Induction (Valid for 1 year)

Site requirement for a shutdown worker, valid for a maximum period of 1 year or for the duration of the shut. Information within these inductions is site specific and allows shut down workers to work unescorted.

12. RELATED DOCUMENTS

Document Name	Document Number
Fitness for Work Standard	NSR-OHS-001-STA
Drug and Alcohol Procedure	NSR-OHS-009-PRO
Site Access Personal Medical Details Form	NSR-OHS-039-FOR
Site Based Drug Screening Authorisation Form	NSR-OHS-040-FOR
Declaration Pending Police Clearance Form	NSR-HR-059-FOR
Prescribed and Over-the-Counter Medication Declaration	NSR-OHS-001B-FOR
Dangerous Goods Safety Act 2004	
Dangerous Goods Safety (Road and Rail Transport of Non-explosives) Regulations 2007	

Prepared by:	Joel Higgins	Document Status:	Controlled
		Review Date:	18/02/2027
Approved by:	Manager - Safety	Approver's Signature:	Katie Jackson

Document No:	NSR-OHS-022-PRO
Revision No:	10.4
Issue Date:	09/05/2025
Page No:	8 of 12

SITE ENTRY PROCEDURE – AUSTRALIAN OPERATIONS

+Process Help Guides	Document Number
+Process - Contractor System Login	NSR-OHS-022D-GUI
+Process - Online Site Entry Request - Mobilisation (Contractor)	NSR-OHS-022E-GUI
+Process - NSR / NSMS Mobilisation	NSR-OHS-022F-GUI
+Process - Online Site Entry Request - Cleared for Site (Contractor)	NSR-OHS-022G-GUI
+Process - Cancel Booking	NSR-OHS-022H-GUI
+Process - Edit Profile	NSR-OHS-022I-GUI
+Process - Administration Approvals	NSR-OHS-022J-GUI
+Process – Online Site Entry Request (Corporate Employee) – All NSR Sites	NSR-OHS-198-GUI

13. REFERENCES

- Work Health and Safety Act 2020
- Work Health and Safety Reg 2022

14. REVISION HISTORY

Revision Number	Date	Changes made to document
7	15/11/2021	
7.1	10/03/2022	Minor change - amended the requirements for site entry under section 7.5 shutdown worker
7.2	27/05/2022	Minor change - amended the requirements for site entry under section 7.5 shutdown worker
8	28/06/2022	Major revision. Vaccine requirements updated.
8.1	29/03/2023	Removed the line item Site specific shutdown inductions in Appendix II. We have streamlined towards an overarching NSR shutdown induction. Also made this addition (2. Requirement for all workers if there is medication to declare) in relation to Appendix I.
8.2	23/08/2023	Changed Drug and Alcohol validity to 90 days from the screening date, for Short Term and Shutdown Worker; Site Requirements: added 'or Medical'; Added option for full medical to table guide; Site Access Personal Medicals Details form validity changed to 60 days.
8.3	05/09/2023	Amendment to typo from previous update.
8.4	19/09/2023	Minor change – updated +Process Help Guides table for Corporate Employees instructions.
9	06/02/2024	Full content review. Construction induction white card compliance added for Shutdown workers.
9.1	22/02/2024	Added to pre-employment section - clarify requirement for PEM screen to be lab DAS
9.2	27/02/2024	Minor changes: removed reference to superseded legislation, removed reference to MSHA
10	27/01/2025	Major review: Delivery driver updated requirements
10.1	13/02/2025	Minor review: 7.3 alignment to the table of requirements.
10.2	18/02/2025	Minor review: Delivery driver table added.
10.3	26/02/2025	Minor review: Removed the requirement for visitors to complete an area specific induction. They are escorted at all times and complete a visitor induction only.
10.4	09/05/2025	Minor review: Table formatting complete.

Prepared by:	Joel Higgins	Document Status:	Controlled
Approved by:	Manager - Safety	Review Date:	18/02/2027
		Approver's Signature:	Katie Jackson

Document No:	NSR-OHS-022-PRO
Revision No:	10.4
Issue Date:	09/05/2025
Page No:	9 of 12

15. APPENDIX I – QUICK REFERENCE GUIDE: SITE ENTRY REQUIREMENTS

	Delivery Driver (Escorted)	Delivery Driver (Long-term Unescorted)	Delivery Driver (dangerous goods)	Visitor	Shutdown Worker	Short Term Worker	Long Term Worker
Mobilisation +Process Workflow	✓	✓	✓	✓	✓	✓	✓
Personal Medical Details Form	✓ ³	✓ ³	✓ ³	✗	✓	✓	✓ ¹
Pre- Employment Medical	✓ ³	✓ ³	✓ ³	✗	✓ ³	✓ ³	✓
Medication Declaration ²	✓	✓	✓	✓	✓	✓	✓
Drug & Alcohol Screen Results	✗	✗	✗	✗	✓	✓	✓
National Police Clearance / Background Check	✗	✗	✓	✗	✓	✓	✓
Drivers License	✓	✓	✓ ⁴	✗	✓	✓	✓

¹ Internal transfer only

² Requirement for all workers if there is medication to declare

³ Option to complete Personal Medical Details Form or a full Medical

⁴ Dangerous goods security card and Dangerous goods drivers licence

⁵ Escorted dependant on site requirements

Prepared by:	Joel Higgins	Document Status:	Controlled
		Review Date:	18/02/2027
Approved by:	Manager - Safety	Approver's Signature:	Katie Jackson

Document No:	NSR-OHS-022-PRO
Revision No:	10.4
Issue Date:	09/05/2025
Page No:	10 of 12

16. APPENDIX II – QUICK REFERENCE GUIDE: INDUCTION REQUIREMENTS

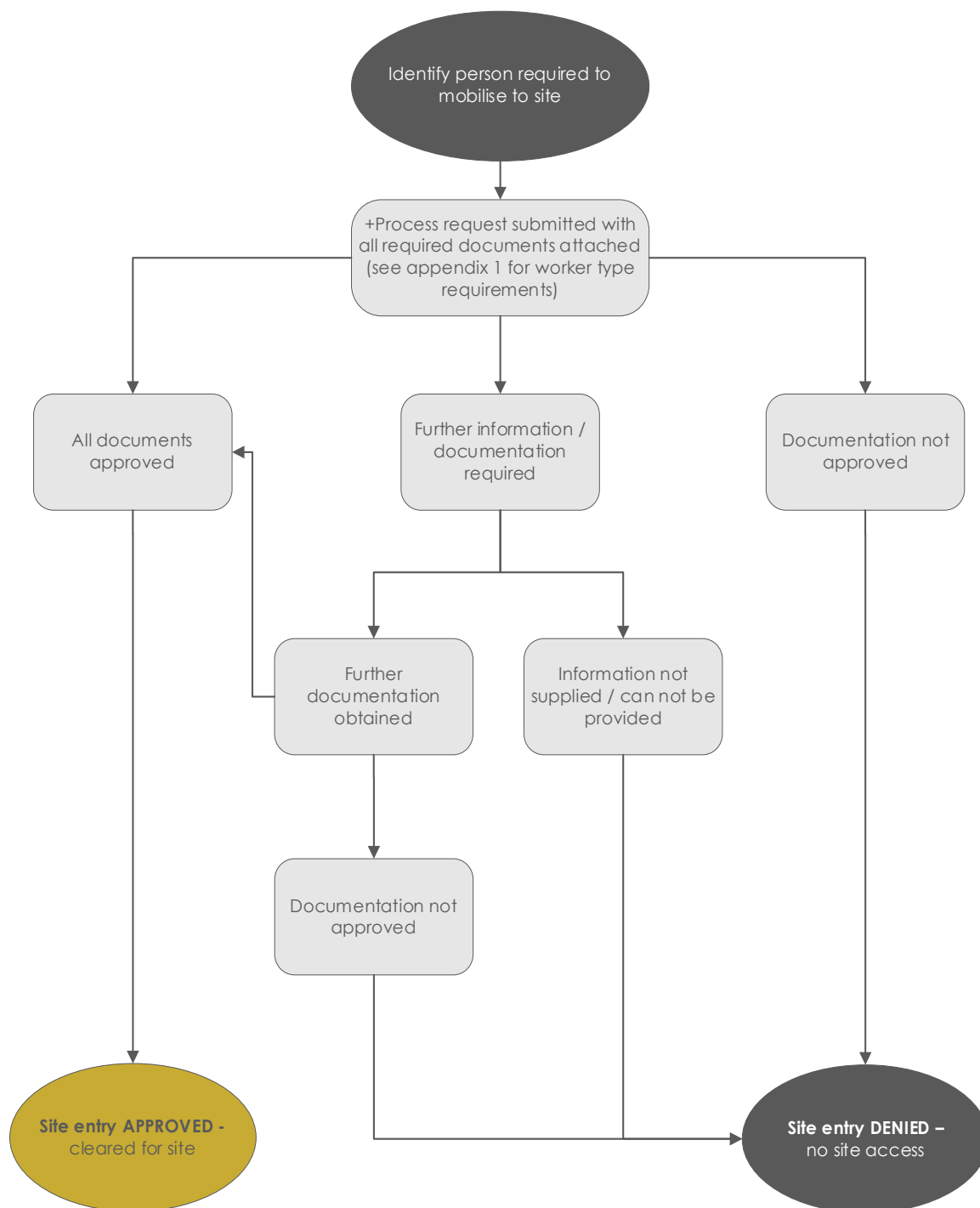
Requirement	Validity	Delivery Driver (Escorted)	Delivery Driver (Long-term Unescorted)	Delivery Driver (Dangerous goods)	Visitor/ Family Visitor	Shutdown Worker	Short Term Worker	Long Term Worker
Company Induction	2 Years	×	×	×	×	×	×	✓
Site Induction	2 Years	×	✓	✓	×	×	×	✓
Area Specific Induction	2 Years	×	✓	✓	×	×	✓	✓
Short Term Workers Induction	3 swings of 8/6, or 2 swings of 2/1 or 2/2	×	×	×	×	×	✓	×
NSR Shutdown Induction	1 Year	×	×	×	×	✓	×	×
Visitors Induction	30 Days	✓	×	×	✓	×	×	×

All workers and visitors must present to the Security Gatehouse or Site Administration to sign in upon each arrival to site and prior to entering any operational areas. They must be always escorted, until all applicable inductions have been completed. This is also applicable to a long-term worker when arriving to site for their first visit and/or until all inductions have been completed.

Prepared by:	Joel Higgins	Document Status:	Controlled
		Review Date:	18/02/2027
Approved by:	Manager - Safety	Approver's Signature:	Katie Jackson

Document No:	NSR-OHS-022-PRO
Revision No:	10.4
Issue Date:	09/05/2025
Page No:	11 of 12

17. APPENDIX III – BASIC SITE ACCESS PROCESS FLOWCHART



Prepared by:	Joel Higgins	Document Status:	Controlled
Approved by:	Manager - Safety	Review Date:	18/02/2027
		Approver's Signature:	Katie Jackson

Document No:	NSR-OHS-022-PRO
Revision No:	10.4
Issue Date:	09/05/2025
Page No:	12 of 12